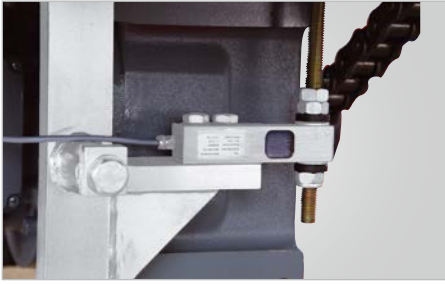


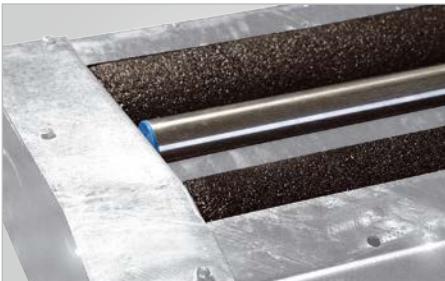
TRUCK





BRAKING FORCE TRANSDUCERS

The features to be tested are detected by means of well-proven strain-gauge type load cells. This wear-free measuring system ensures reliable and error-free measurement of the forces produced.



ROLLER COATING

The steel rollers with wear-proof plastic coating on welded expanded metal mesh guarantee tyre-preserving vehicle tests.

Alternatively SmoothGrip rollers are available, featuring thousands of nubs welded onto the steel rollers to ensure long life, low tyre wear and best suitability for spiked tyres.



PROVEN TESTING TECHNOLOGY FOR YOUR WORKSHOP

Unterneukirchen is the centre of excellence for testing technology in the strong and efficient Snap-on Group. For more than 50 years the name of Hofmann has been a synonym for engineering and manufacturing of testing and diagnostics technology for cars and trucks.

Our customers benefit from concentrated expertise and direct and smooth handling of enquiries and orders.

A qualified team, the well-known product quality, good service and the advantages of the strong global Snap-on Group guarantee testing technology which is constantly optimised in terms of customer requirements.

This is the reason why our equipment has been approved and recommended by many important car manufacturers.

Roller brake testers in proven testing technology for an axle load range of 6 to 20 tons – the optimum solution for workshops, truck and bus fleets as well as expert organisations carrying out inspections in line with government standards.

RUST-PROOF FEELER ROLLS

The brake test does not start before both feeler rolls are depressed. This safety feature prevents unintentional starting of the brake tester.



PROVEN TESTING TECHNOLOGY FOR YOUR WORKSHOP

The brake testers offer standard features such as:

- Automatic mode
- Manual mode
- Ovality measurement
- Cut-out at wheel lock
- Automatic switching in
- Display of braking force imbalance
- Indication of cut-out at wheel lock
- Automatic switching over between car and truck modes
- Electric automatic drive-off aid

ELEVATED REAR ROLLERS

Elevated rear rollers facilitate driving off the rollers and prevent the vehicle from driving off too early.

Alternatively truck brake testers of 13 t axled load and more are available with level rollers, dual direction testing and 4WD mode.



BASIC EQUIPMENT

The brake testers consist of the following basic equipment:

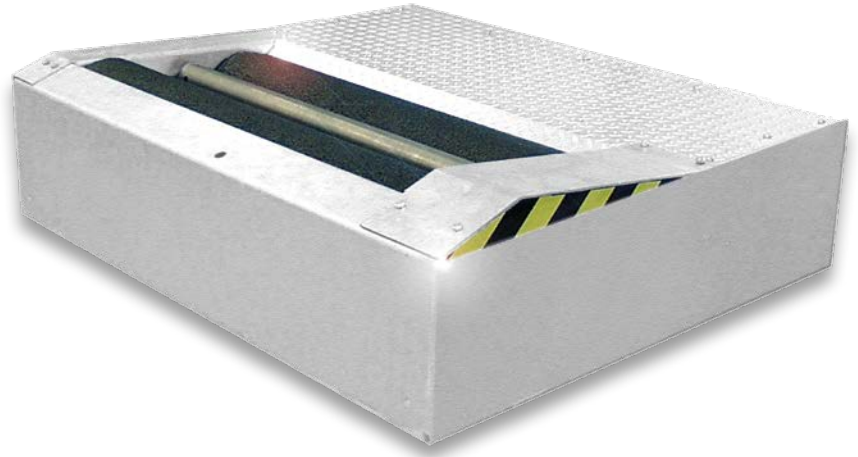
- roller set with cables
- display cabinet

The mechanical parts are hot-galvanised and the motors are splash-proof – the optimum prerequisite to withstand harsh shop conditions and outdoor installation.

AUTOMATIC TEST SEQUENCE

After the error check routine the brake test starts automatically, determining rolling resistance of tight brakes, ovality of brake drum and brake disc and the permanent braking force imbalance between left-hand and right-hand sides.

The data measured for the individual axles is assigned automatically.



***PROVEN TESTING TECHNOLOGY
FOR YOUR WORKSHOP***

Depending on individual requirements and conditions on site the roller sets can be installed in front of the pit, or separately on left and right sides.

brekon® 141-6 of up to 6 t axle load

- Roller set in compact design
- Motors in middle position

safelane® truck N of up to 13 t and 15 t axle load

- Roller set in two-part design
- Motors under the rollers

safelane® truck N of up to 16 t and 20 t axle load

- Roller set in two-part design
- Motors under the rollers

safelane® truck G of up to 16 t axle load

- Roller set in two-part compact design
- Motors at drive-off end

Brake testers for 13 t axle load and more are available with one or two speeds. All truck brake testers are also available with brake motors.

BUILT-IN FRAMES FOR THE ROLLER SETS FACILITATE PREPARATION OF THE FOUNDATION

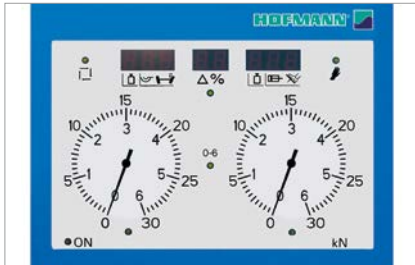
- There is no need to embed in concrete a steel beam with edge guards as otherwise inevitable.
- The time required for encasing is considerably reduced.
- Foundations will always fit perfectly.

ADDITIONAL BRAKE TESTER MODELS:

- safelane® truck in surface-mounted version (mobile) of up to 13 t axle load

CONTROL OPTIONS

DISPLAY CABINET SC



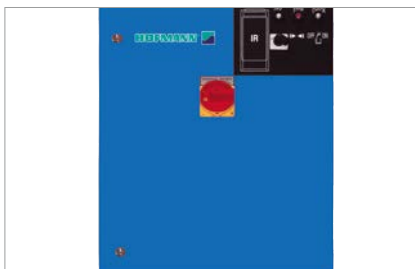
With SC versions the electronic unit is integrated in the display cabinet, hence no power cabinet is required.

DISPLAY CABINET COMBI



The COMBI display cabinet can be used in conjunction with the power cabinet only.

POWER CABINET



Measuring range of 0–6/0–30 kN for safelane® truck N – 13 t

Measuring range of 0–8/0–40 kN for
 – safelane® truck N 15 t
 – safelane® truck N 16 t and 20 t
 – safelane® truck G 16 t

When a car is tested, the measuring range switches automatically to 6 kN or 8 kN.

In addition there is the possibility of simultaneous operation, e.g. with the display cabinet installed in the check-in bay and connected via COM lead to the PC which is for instance located in the shop office.

OPTIONAL POCKET PC PWA



The optional PWA (pocket workshop assistant) is a pocket PC with Hofmann testing software (country- or customerspecific software must be ordered separately and is not included in delivery) and integrated remote control which can replace other display units such as display cabinet or monitor.

The entire test sequence is controlled from driver's seat. Only the function keys required for the current test are displayed on the screen. Control is via touch screen. A PC station is necessary for connection of the PWA.

TABLET PC



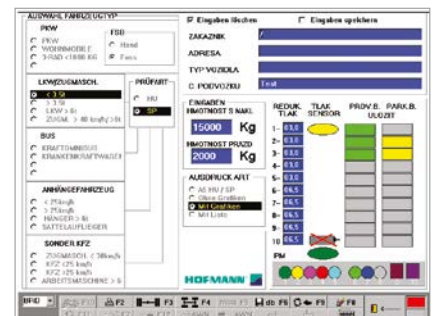
As an alternative to the pocket PC the tablet PC is rugged and very handy and has the added benefit that no specific user software is required.

PC CABINET (OPTIONAL)

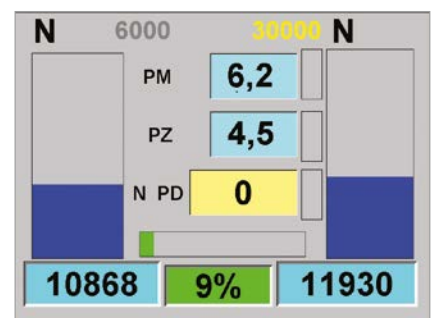


The optional PC cabinet offers ample space for a PC, a TFT monitor, an A4 ink-jet printer, keyboard and mouse.

TESTING SOFTWARE MAIN SCREEN



GRAPHICAL BRAKE ANALYSIS



BRAKE TESTER OPTIONS

SIDE-SLIP TESTER TRACTEST 4000



The side-slip tester is designed to measure toe of the vehicle under test. The results of toe-in and toe-out respectively are read out on the optional integrated LED on the display cabinet, or in graphical form on the optional monitor.

JOINT-PLAY DETECTOR WEARTEST 4600 FA



The joint play detector is a useful supplement for check-in or inspections to carry out a visual check of axle play. The galvanised test plates are operated hydraulically upon key operation of the test lamp. The test plates can be controlled one by one, in counterdirections (4-way control), or in same directions (8-way control).

4WD KIT FOR BRAKE TESTERS WITH ELEVATED ROLLERS

In 4WD mode the roller sets start in counter-directions to prevent damage to gearbox and axle of 4WD buses and trucks.

LIFTING DEVICE HBV 4000



The lifting device HBV 4000 can be used only in conjunction with safelane® truck N 20 t with rollers 1000 mm long and wheel/axle load weighing unit to simulate various wheel/axle loads. The roller set is raised and pressed against the vehicle under test.

LOAD SIMULATOR NSV 4000

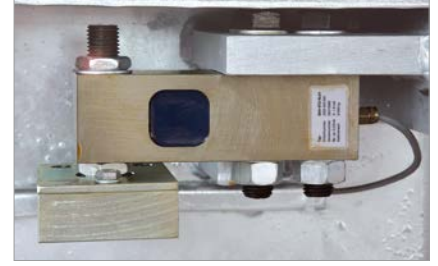
The load simulator NSV 4000 is designed to simulate various axle loads of 0 to 10,000 kg on unloaded trucks by pulling the vehicle downwards by means of chains (safelane® truck N 20 t only).

LOAD SIMULATOR NSV 3000



Same as NSV 4000, but with one instead of two cylinders to simulate axle loads of 0 to 2,800 kg; for use on all truck brake testers of type N, N SC, G, G SC for 13t and more.

WHEEL/AXLE LOAD WEIGHING UNIT



The wheel / axle load weighing unit is designed to automatically detect, calculate and store weight. The values are read out on the optional integrated LED on the display cabinet, or in graphical form on the optional monitor.

SAFETY DEVICE FOR PIT INSTALLATION



When the roller sets are installed over a pit, the danger zone is to be protected with a safety device so that the rollers stop at once when a person enters the danger zone (comply with country-specific regulations).

PRESSURE TRANSDUCERS

Set of 2 to 8 off, wireless design, also available as cable type transducer. The values measured remain available also for later analysis.

PEDAL FORCE MEASURING SYSTEMS

For pedal force measurement during the brake test pedal force measuring systems are available in cable or wireless design. Pedal pressure is read out either on an optional integrated LED on the display cabinet, or in graphical form on the optional monitor. One version is available with integrated display and power supply.

ADDITIONAL OPTIONS

IR REMOTE CONTROL UNIT



A4 printer black/white, serial interface

COLUMN OR SWIVEL-TYPE WALL BRACKET FOR DISPLAY CABINET



8-digit LED

ROLLER COVER PLATES, TRAVERSABLE VERSION, PLUG-IN TYPE



TECHNICAL DATA

		brekon 141-6	safelane truck N	safelane truck N
Max. drive-over load per axle	t	6	13	15
Roller coefficient dry – wet		> 0.7 / > 0.6	> 0.7 / > 0.6	> 0.7 / > 0.6
Temperature range	°C	0 up to + 40	0 up to + 40	0 up to + 40
Measuring principle		load cell	load cell	load cell
Processing of measured data		microprocessor	microprocessor	microprocessor
Measuring range: maximum achievable brake force	kN	12	26	30
Display cabinet SC – H x W x D	mm	600 x 800 x 200	600 x 800 x 200	600 x 800 x 200
Display cabinet SC – Weight	kg	35	35	35
Display cabinet Combi – H x W x D	mm	–	900 x 900 x 200	900 x 900 x 200
Display cabinet Combi – Weight	kg	–	50	50
Power cabinet – H x W x D	mm	–	800 x 600 x 200	800 x 600 x 200
Power cabinet – Weight	kg	–	35	35
Mains voltage	V	3/N/PE 400 V AC	3/N/PE 400 V AC	3/N/PE 400 V AC
Frequency	Hz	50	50	50
Fusing slow-blow type	A	3 x 25	3 x 50	3 x 50
Drive rating	kW	2 x 3.7	2 x 9.2	2 x 11
Test width min. – max.	mm	800 – 2800	variable	variable
Roller set – W x L x H	mm	3070 x 700 x 270	1225 x 700 x 550	1225 x 700 x 550
Roller diameter	mm	204	204	204
Roller length	mm	1000	1000	1000
Roller elevation	mm	–	30	30
Anti-corrosion finish: galvanisation	DIN	50976-t Zno	50976-t Zno	50976-t Zno
Idling speed (2nd speed optional)	km/h	2.6	2.5 / 5.0	2.8 / 5.6
Roller set – Weight	kg	725	2 x 400	2 x 430



TECHNICAL DATA

		safelane truck G	safelane truck N	safelane truck N
Max. drive-over load per axle	t	6	16	20
Roller coefficient dry – wet		> 0.7 / > 0.6	> 0.7 / > 0.6	> 0.7 / > 0.6
Temperature range	°C	0 up to + 40	0 up to + 40	0 up to + 40
Measuring principle		load cell	load cell	load cell
Processing of measured data		microprocessor	microprocessor	microprocessor
Measuring range: maximum achievable brake force	kN	30	30	40
Display cabinet SC – H x W x D	mm	600 x 800 x 200	600 x 800 x 200	600 x 800 x 200
Display cabinet SC – Weight	kg	35	35	35
Display cabinet Combi – H x W x D	mm	900 x 900 x 200	900 x 900 x 200	900 x 900 x 200
Display cabinet Combi – Weight	kg	50	50	50
Power cabinet – H x W x D	mm	800 x 600 x 200	800 x 600 x 200	800 x 600 x 200
Power cabinet – Weight	kg	48	35	35
Mains voltage	V	3/N/PE 400 V AC	3/N/PE 400 V AC	3/N/PE 400 V AC
Frequency	Hz	50	50	50
Fusing slow-blow type	A	3 x 50	3 x 50	3 x 80
Drive rating	kW	2 x 11	2 x 11	2 x 15
Test width min. – max.	mm	variable	variable	variable
Roller set – W x L x H	mm	1390 x 1560 x 380	1270 x 1210 x 640	1270 x 1210 x 640
Roller diameter	mm	255	255	255
Roller length	mm	1200	1000	1000
Roller elevation	mm	50	50	50
Anti-corrosion finish: galvanisation	DIN	50976-t Zno	50976-t Zno	50976-t Zno
Idling speed (2nd speed optional)	km/h	2.7 / 5.4	2.7 / 5.4	2.6 / 5.2
Roller set – Weight	kg	2 x 960	2 x 700	2 x 700

EMEA-JA

Snap-on Equipment s.r.l. - Via Prov. Carpi, 33 - 42015 Correggio (RE)
Phone: +39 0522 733-411 - Fax: +39 0522 733-479 - www.hofmann-europe.com

Austria

Snap-on Equipment Austria GmbH - Hauptstrasse 24/Top 14 - A-2880 St. Corona/Wechsel (RE)
Phone: +43 1 865 97 84 - Fax: +43 1 865 97 84 29 - www.hofmann-europe.com

France

Snap-on Equipment France - ZA du Vert Galant - 15, rue de la Guivernone BP 97175
Saint-Ouen-l'Aumône - 95056 Cergy-Pontoise CEDEX
Phone: +33 134 48 58-78 - Fax: +33 134 48 58-70 - www.hofmann-france.fr

Germany

Snap-on Equipment GmbH - Konrad-Zuse-Straße 1 - 84579 Unterneukirchen
Phone: +49 8634 622-0 - Fax: +49 8634 5501 - www.hofmann-deutschland.com

Italy

Snap-on Equipment s.r.l. - Via Prov. Carpi, 33 - 42015 Correggio (RE)
Phone: +39 0522 733-411 - Fax: +39 0522 733-410 - www.hofmann-italia.com

United Kingdom

Snap-on Equipment Ltd. - Unit 17 Denney Road, King's Lynn - Norfolk PE30 4HG
Phone: +44 118 929-6811 - Fax: +44 118 966-4369 - www.snapon-equipment.co.uk

