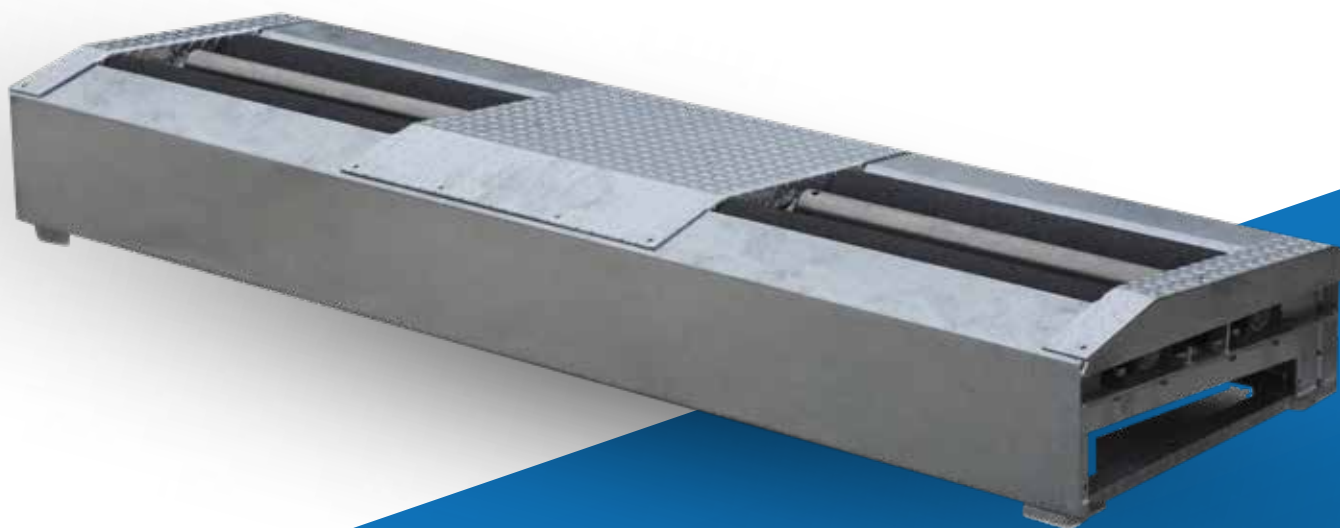
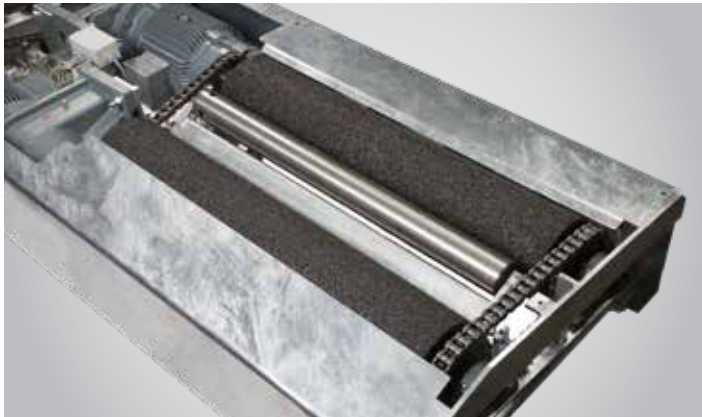


ROLLER BRAKE TESTER

# ***SAFELANE<sup>®</sup>*** ***TRUCK K***



# SAFELANE® TRUCK K



The compact design of the roller set simplifies a lot the installation and represents a convenient solution for installation when:

- Inspection pit is not present
- Outside, due to the reduced depth
- Some of the existing foundations are present

Service and calibration are also facilitated, since all the relevant components are easily accessible in the middle of the frame, between the left and right rollers. The standard double testing speeds allows to test also light vehicles.

## Roller set



- Roller set, in compact design, hot dip galvanized and consequently suitable for outdoor installation
- Coated rollers (new CPS coating which has 3 YEARS WARRANTY)
- 985 mm roller length
- Splash-proof motors, 11 kW with electric automatic drive-off aid to facilitate driving off the rollers or equipped with brake as option
- Measurement with wear-free strain-gauge type load cells

## Display cabinets

### safelane® truck K 2 16 t

Large analogue display unit and power cabinet separated. It can be used stand-alone (with printer) or in connection with PC.



### safelane® truck K SC 2 16 t

Analogue display unit with control unit integrated without power cabinet. It can be used stand-alone (with printer) or in connection with PC.



The measuring range for both version is 0–8 / 0–40 kN, when a car is tested, the measuring range switches automatically to 8 kN.

## TECHNICAL SPECIFICATIONS

Max. drive over weight per axle	16.000 kg
Measuring range	0-8.000 / 0-40.000 N
Max. brake force	30.000 N
Test weight per axle according ISO 21069 (70% braking efficiency)	8.600 kg
Idling speed	2,7 - 5,4 km/h
Roller coefficient dry wet	> 0,7 / > 0,6
Motor power	2 x 11 kW
Roller diameter	204 mm
Roller length	985 mm
Roller elevation	30 mm
Test width min-max	952 - 2922 mm
Dimension of the roller set W x L x H	3160 x 920 x 350 mm
Dimension of the display cabinet H x W x D	900 x 900 x 200 mm
Dimension of the display cabinet (SC) H x W x D	800 x 600 x 200 mm
Power supply and fuse rating, slow-blow type	3/N/PE 400 V AC - 3 x 63 A

**EMEA-JA**  
Snap-on Equipment s.r.l. · Via Prov. Carpi, 33 · 42015 Correggio (RE)  
Phone: +39 0522 733-411 · Fax: +39 0522 733-479

**France**  
Snap-on Equipment France · ZA du Vert Galant · 15, rue de la Guivernone BP 97175  
Saint-Ouen-l'Aumône · 95056 Cergy-Pontoise CEDEX  
Phone: +33 134 48 58-78 · Fax: +33 134 48 58-70

**Germany**  
Snap-on Equipment GmbH · Konrad-Zuse-Straße 1 · 84579 Unterneukirchen  
Phone: +49 8634 622-0 · Fax: +49 8634 5501

**Italy**  
Snap-on Equipment s.r.l. · Via Prov. Carpi, 33 · 42015 Correggio (RE)  
Phone: +39 0522 733-411 · Fax: +39 0522 733-410

**United Kingdom**  
Snap-on Equipment Ltd. · Unit 17 Denney Road, King's Lynn · Norfolk PE30 4HG  
Phone: +44 118 929-6811 · Fax: +44 118 966-4369

Part of the machines is illustrated with optional extras which are available at extra cost. Technical modifications reserved.

